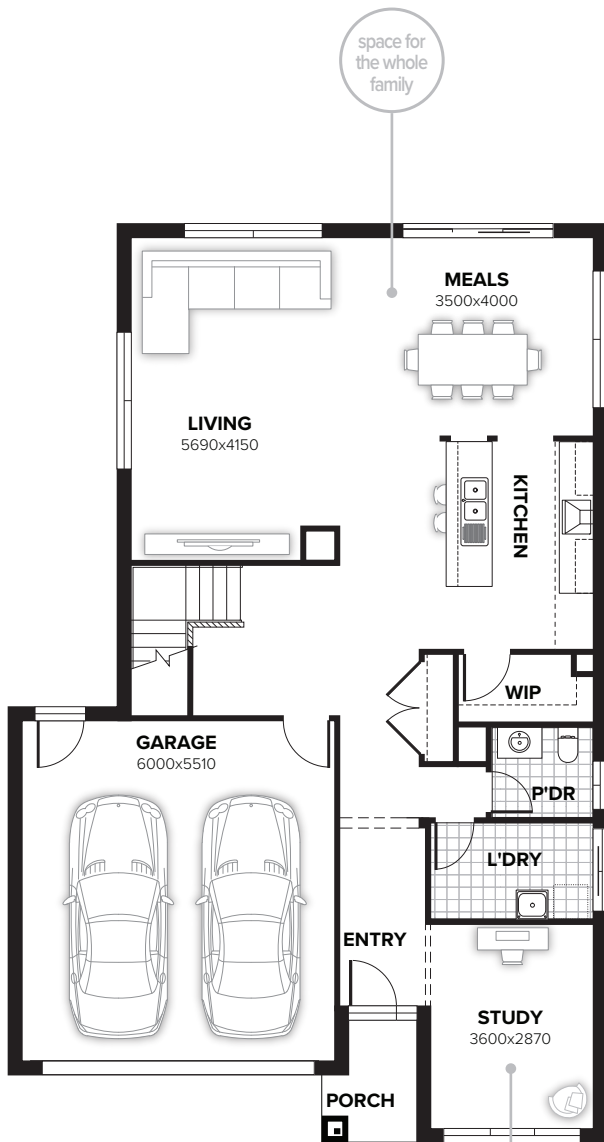


CARTINGTON

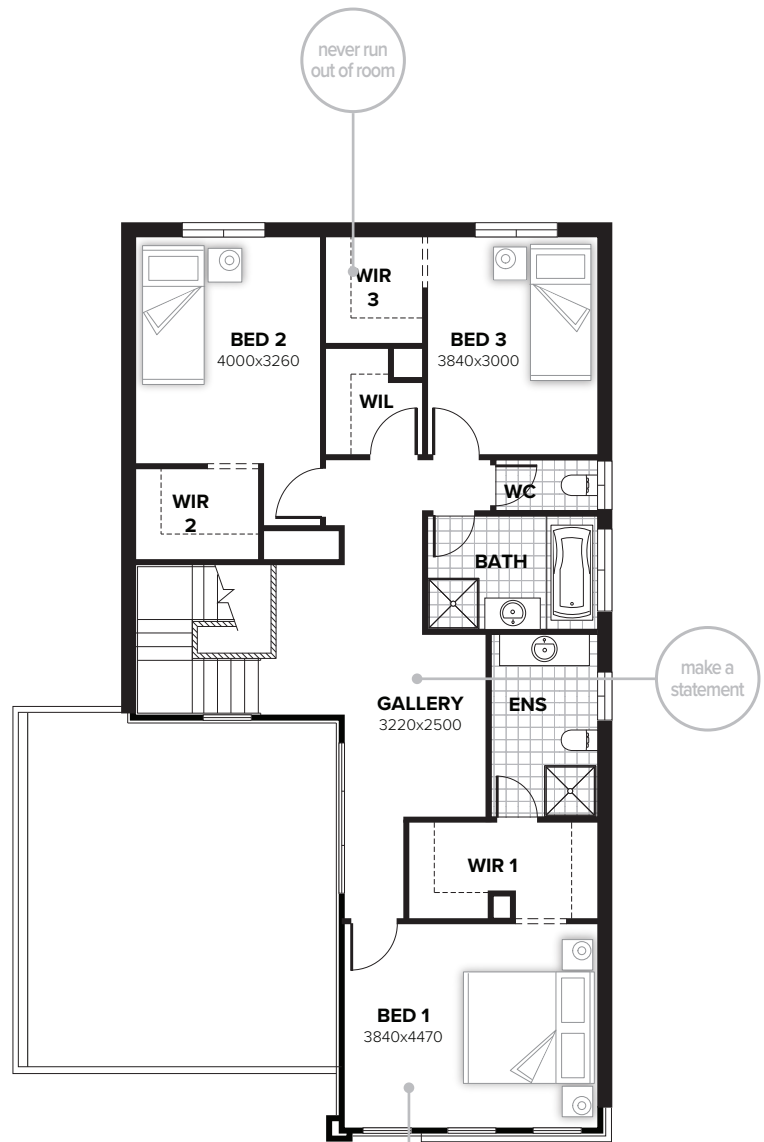


CARTINGTON 259

3 2.5 0 2



ground floor



first floor

FLOORPLAN OPTIONS

Want to put a personal touch on your home? Speak to your New Home Consultant about the exciting range of ready-to-go design options for this floorplan.

Popular design options include:

- | | |
|-------------------|--------------------------------|
| • Kitchen option | • Gas fireplace in living room |
| • Laundry upgrade | • Storage and workshop options |
| • Alfresco option | • Triple car garage option |

residence	219.29sqm	23.60sq
porch	3.17sqm	0.34sq
garage	36.51sqm	3.93sq
total	258.97sqm	27.88sq

Listed details based on Miranda façade floorplan (illustrated)

Call 13 BURBANK Visit burbank.com.au

Burbank 
#noplacelikehome

*Copyright conditions. All photos and illustrations are representative only. Floor plans and specifications may be varied by Burbank without notice, the dimensions are diagrammatic only and a Building Contract with final drawings will display correct dimensions and detail. All designs are the property of Burbank and must not be used, reproduced, copied or varied, wholly or in part without written permission from an authorised Burbank representative. Copyright Burbank Australia (NSW) Pty Ltd. ABN 88 610 822 870. NSW BL 295627C. ACT BL 2016566.

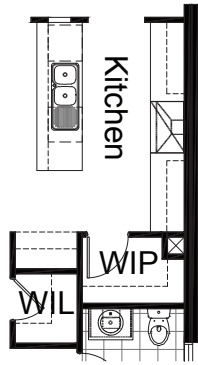
FLOORPLAN OPTIONS

CARTINGTON 259

3 2.5 0 2

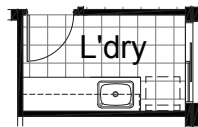
OPTION K1

Provide Kitchen option with additional 2no. 900mm base cupboards, 2no. 450mm base cupboards, 2no. 900mm overhead cupboards, 2no. 450mm overhead cupboards, 1no. 900mm upright oven with canopy rangehood over, 1no. laminated Microwave provision. 1no. 800mm base cupboard, 1no. laminated dishwasher provision, 1no. 450mm drawers and relocate refrigerator space to suit and provide 1no. laminated open shelf above. Reduce WIP by 20mm and provide WIL and additional tiled splash back and bench top to suit.



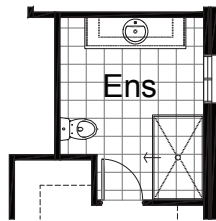
OPTION LD1

Provide Laundry Option with 2no. 800mm base cupboards, 1no. 400mm base cupboard, 2no. 800mm overhead cupboards and 1no. 400mm overhead cupboards with additional bench top and tiled splash back to suit.



OPTION IP1

Provide Ensuite upgrade with additional 900mm x 1500mm tiled shower base, 1782mm wide vanity basin unit and additional 450mm wide hanging rail/shelf to WIR 4. Delete Gallery and increase Ensuite width by 650mm.



OPTION EP1

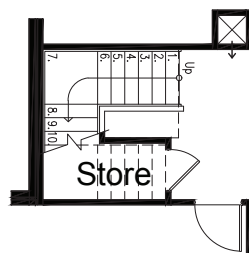
Provide Alfresco Option to rear of Meals including 2no. brick piers and structural concrete floor. Increase area by 14.35m². Increase length by 3240mm.



Meals

OPTION IP3

Provide Store room under staircase with additional plaster lined timber framed walls and ceiling, 1no. light point and 1no. 720mm flush panel hinged door.



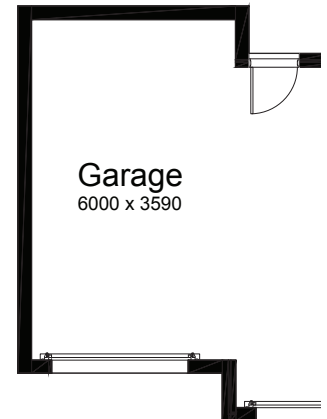
OPTION G1

Provide extension to Garage to create additional Storage area. Increases area by 4.58m². Increases width by 850mm.



OPTION G3

Provide triple car Garage including additional roller door to front. Increases area by 23.68m². Increases width by 3600mm.



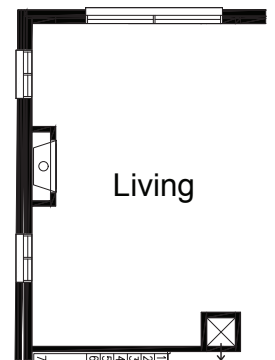
OPTION G2

Provide extension to Garage to create Workshop area including additional window to suit. Increases width by 2400mm. Increases area by 12.93m².



OPTION IP1

Provide Jetmaster SL-350 gas fireplace, 400mm off floor level in a 1400mm x 420mm boxed out plaster wall with a 4 sided black fascia to Living room side wall and provide additional 2no. 2057mm x 850mm aluminium awning windows in lieu of standard 1no. 1027mm x 2410mm window.



Call 13 BURBANK Visit burbank.com.au

Burbank 
#noplacelikehome

*Copyright conditions. All photos and illustrations are representative only. Floor plans and specifications may be varied by Burbank without notice, the dimensions are diagrammatic only and a Building Contract with final drawings will display correct dimensions and detail. All designs are the property of Burbank and must not be used, reproduced, copied or varied, wholly or in part without written permission from an authorised Burbank representative. Copyright Burbank Australia (NSW) Pty Ltd. ABN 88 610 822 870. NSW BL 295627C. ACT BL 2016566.